

TRAINING DATABASE

FOR **CAPACITY
BUILDING
PROGRAMME**

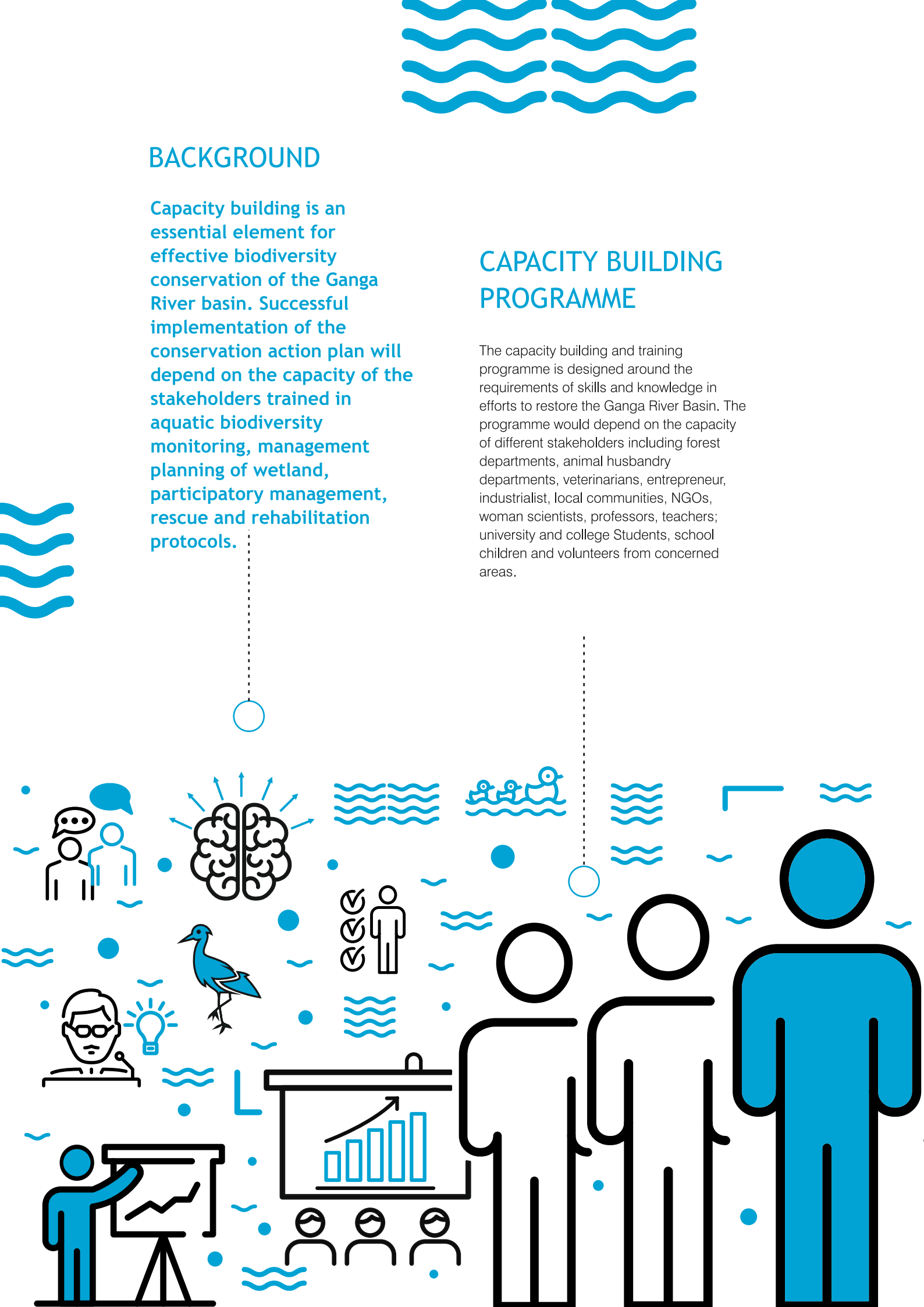


BACKGROUND

Capacity building is an essential element for effective biodiversity conservation of the Ganga River basin. Successful implementation of the conservation action plan will depend on the capacity of the stakeholders trained in aquatic biodiversity monitoring, management planning of wetland, participatory management, rescue and rehabilitation protocols.

CAPACITY BUILDING PROGRAMME

The capacity building and training programme is designed around the requirements of skills and knowledge in efforts to restore the Ganga River Basin. The programme would depend on the capacity of different stakeholders including forest departments, animal husbandry departments, veterinarians, entrepreneur, industrialist, local communities, NGOs, woman scientists, professors, teachers; university and college Students, school children and volunteers from concerned areas.

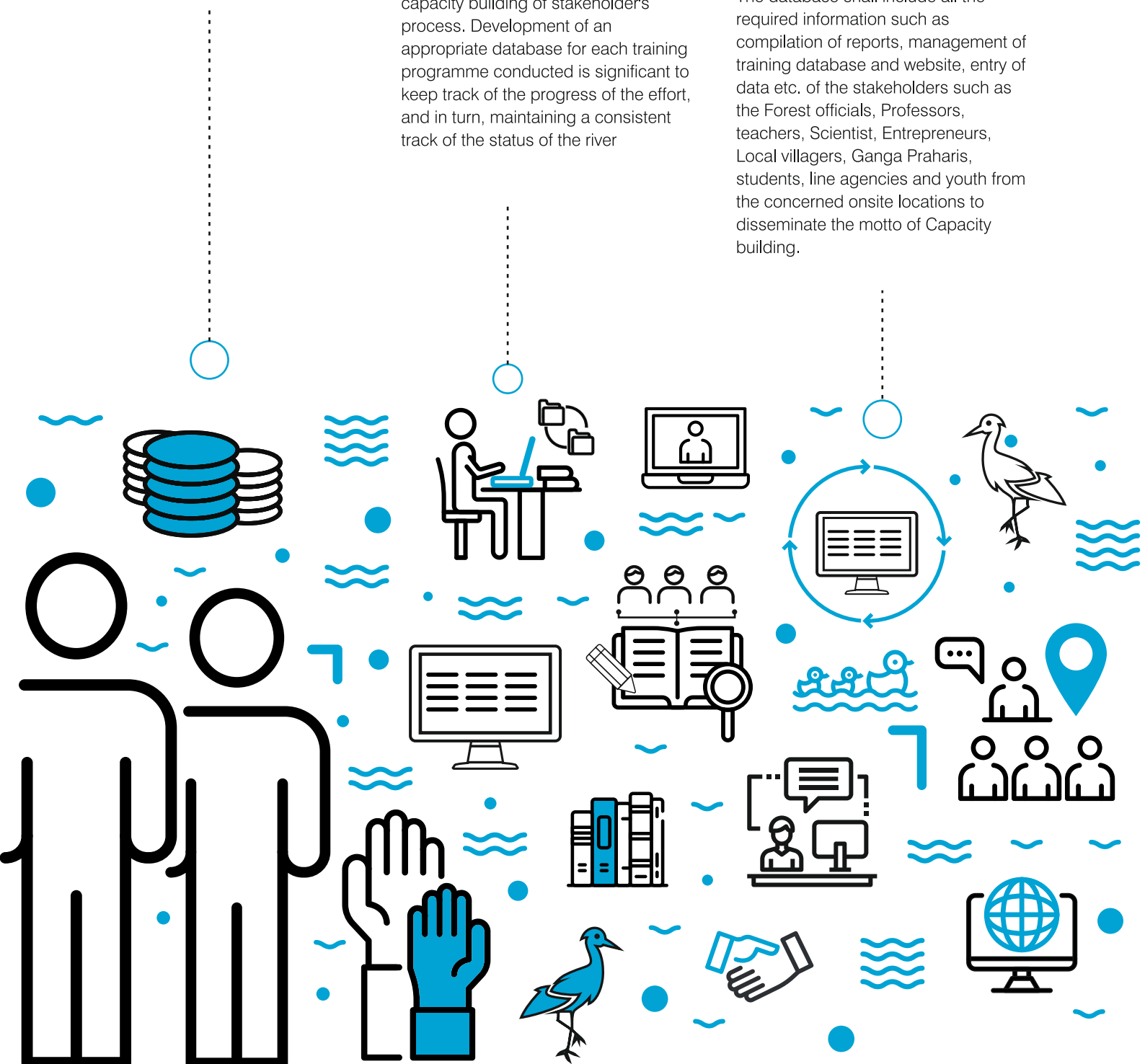


[illegible]

A reliable database is a key input to the capacity building of stakeholder's process. Development of an appropriate database for each training programme conducted is significant to keep track of the progress of the effort, and in turn, maintaining a consistent track of the status of the river

Training database is necessary to ensure the creation of a comprehensive database of each training programmes, participant including their contact details, schedules, training budget, resource persons etc. This ensures transparency and accountability on every front.

The training team of WII-NMCG conducts regular sensitization and training workshops with the identified stakeholders to build their capacities. The database shall include all the required information such as compilation of reports, management of training database and website, entry of data etc. of the stakeholders such as the Forest officials, Professors, teachers, Scientist, Entrepreneurs, Local villagers, Ganga Praharis, students, line agencies and youth from the concerned onsite locations to disseminate the motto of Capacity building.





RECORD KEEPING PROCESS

Training records can be used as a basis for goal setting or aid in selecting staff assignments by matching competencies with the required skills. The WII-NMCG training team under Capacity building of forest departments and other stakeholders conducts training workshops and regular sensitization with the identified stakeholders to build their capacities.

Extensive records of the aforementioned are maintained to provide the data needed to make decisions based on actual performance after specific training programs. Records provide an easy method to identify training gaps that direct future subject matter. Further, the training gap assesses the needs of the organization and the knowledge, skills, attitudes, and abilities of the staff in relation to the task they perform.



PHOTO GALLERY

Photographic evidence of each activity in all training and sensitization workshops are kept as a matter of record and are often made a matter of public record.



MEDIA COVERAGE

To ensure maximum widespread awareness, details of the events are given extensive media coverage. This ensures widespread dissemination of the information and knowledge distributed in these training sessions. Various forms of media, including print, like newspapers, brochures and booklets, and electronic, including radio, and various social media platforms are utilized for the same.

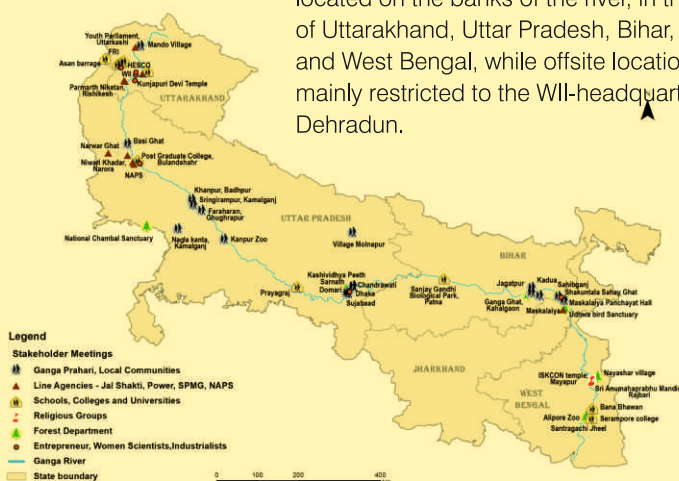
CONTACT DETAILS

The contact information of the entire team from WII is also made a matter of record to ensure transparency and accountability.



LOCATION

The locations of the training programmes were broadly categorized into onsite and offsite locations. Since the point of focus of the project is the River Ganga, the onsite locations can be located on the banks of the river, in the 5 states of Uttarakhand, Uttar Pradesh, Bihar, Jharkhand and West Bengal, while offsite locations are mainly restricted to the WII-headquarter, Dehradun.



RESOURCE PERSONS

Resource persons called upon to interact and to provide input with the participants from the Institute itself are often termed as 'in-house' or internal resource persons, whereas often experts might be invited from outside the Institute who are known as external resource persons.



Project Coordinators

Dr. Ruchi Badola (ruchi@wii.gov.in)
Dr. S.A Hussain (hussain@wii.gov.in)

Training coordinator & team

Dr. Sangeeta Angom (sangeeta@wii.gov.in)
Ms. Monika Mehralu (monika14@wii.gov.in)
Mr. Keshav kumar (keshav07@wii.gov.in)
Mr. Ratish Singh (ratish@wii.gov.in)
Mr. Aakash Rawat (aakashrawat@wii.gov.in)

Quick Links (At the backside of brochure)

Website: http://wii.gov.in/nmcb_trainee_database
http://www.wii.gov.in/nmcb/news_events
Facebook Page: <http://facebook.com/glimpsesofganga>
Instagram: <http://instagrm.com/glimpsesofganga>