

Sponsored Thesis Project Competition on "Re-imagining Urban Rivers"

Integrated Eco-Sensitive Approach
to Generate River-Related Economy,
A case of Gomti Riverfront, Lucknow

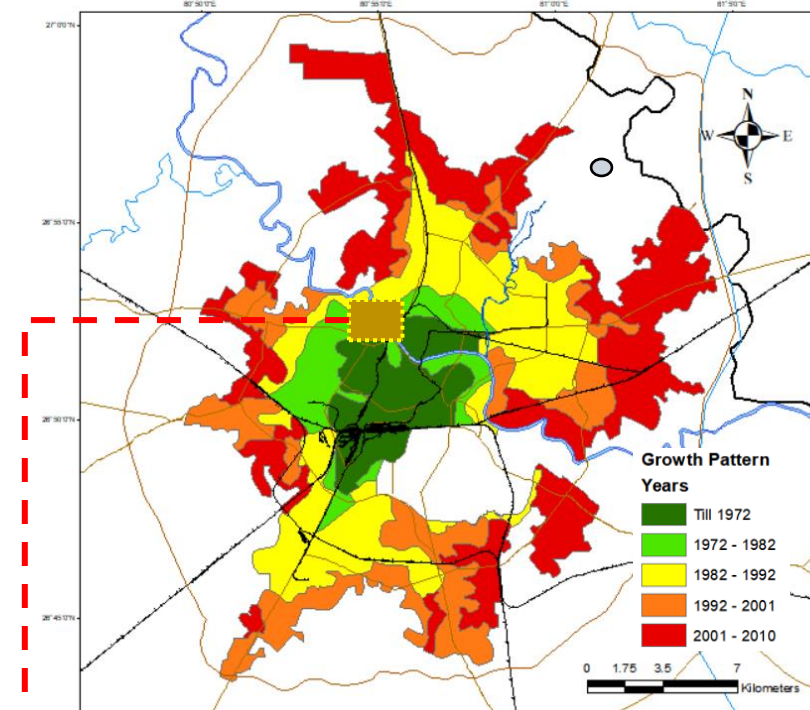
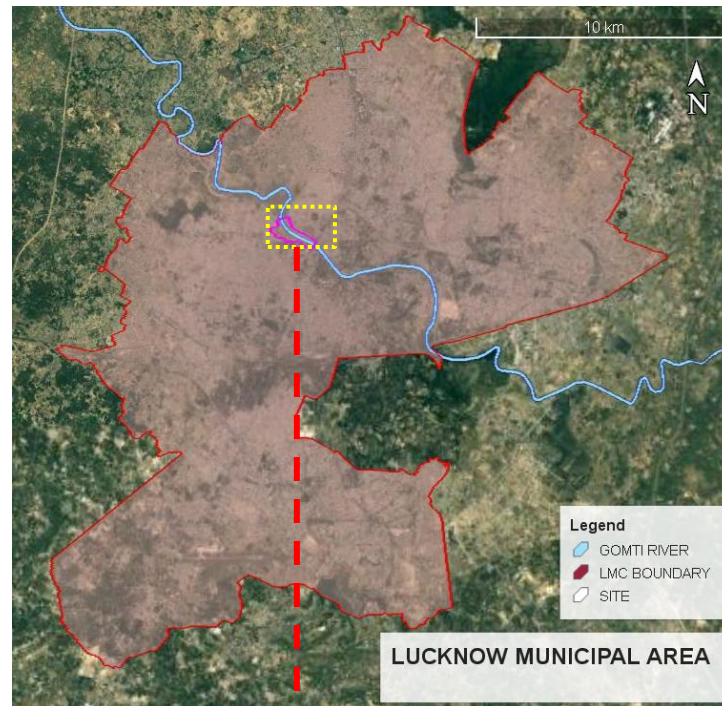
Student Name: Rajarshi
Course Discipline: Masters of Urban and
Regional Planning (MURP)

AIM

To create a sustainable eco-management plan' (Ecological & Economical), for Gomti riverfront area in Lucknow with a focus on overall development.

Potential Interventions based on the Analysis and the site study:

1. Riparian Buffer
2. Enhancing Public Accessibility
3. Tourism Economics
4. New economy generation
5. Safeguarding indigenous Occupations



Growth Pattern of Lucknow (Source: LMC)



Source: Landscape Journal of India, 2014



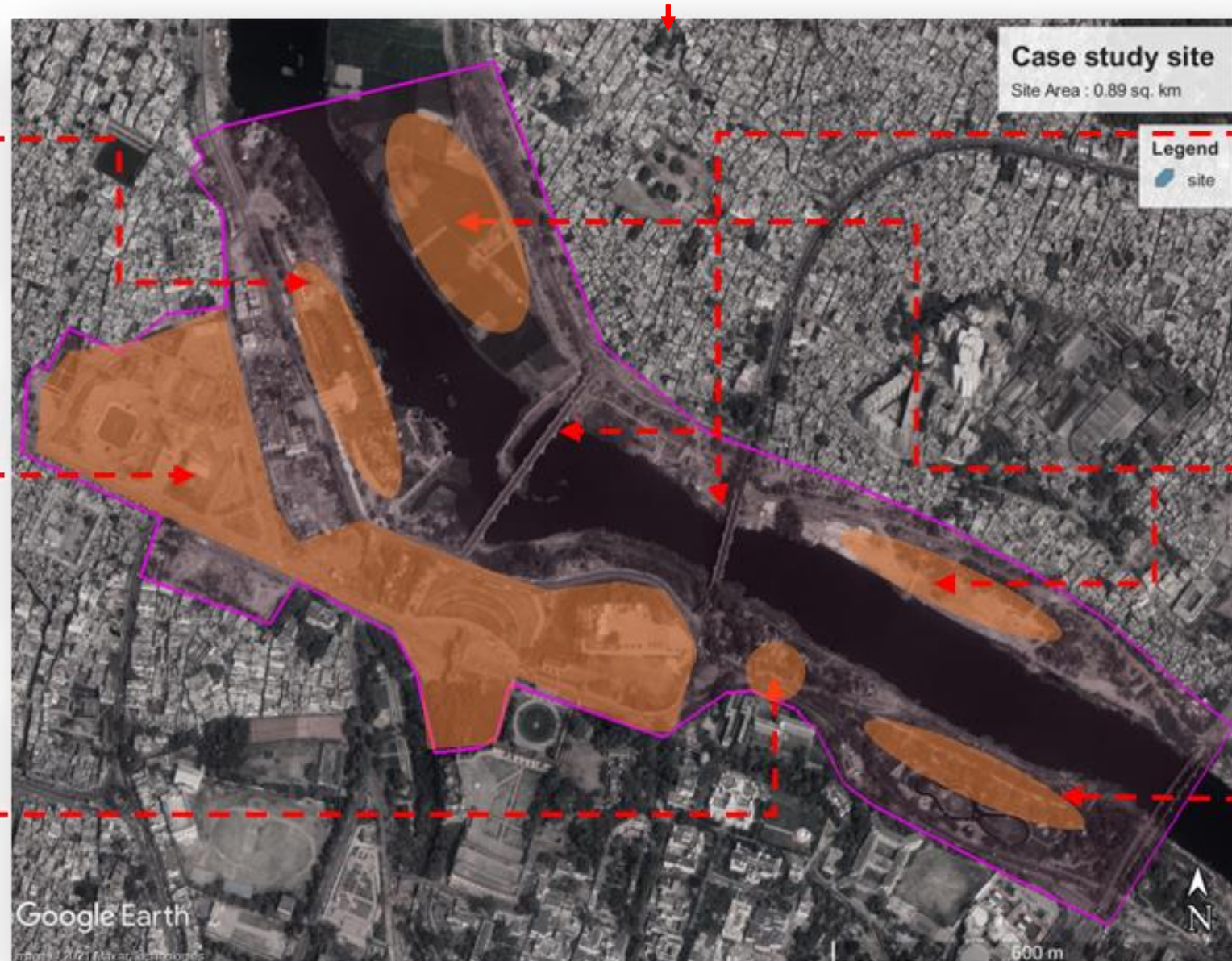
KUDIA GHAT



HERITAGE ZONE



CHANNELIZATION



EXISTING SCENARIO



HARDINGE BRIDGE



OPEN LAND ALONG RIVER



RIPERIAN



PAVILION WITH GREEN SPACE



KUDIA GHAT



HERITAGE ZONE



HERITAGE ZONE



BOTANICAL GARDEN



FINAL OUTCOME



TOURIST INFORMATION CENTRE



DHOBI GHAT



NEW HARDINGE BRIDGE



DECK ALONG RIVER



HERBARIUM AND GARDEN