

River Basin Management Cycle Training Series

Case Study – Tapi River Basin



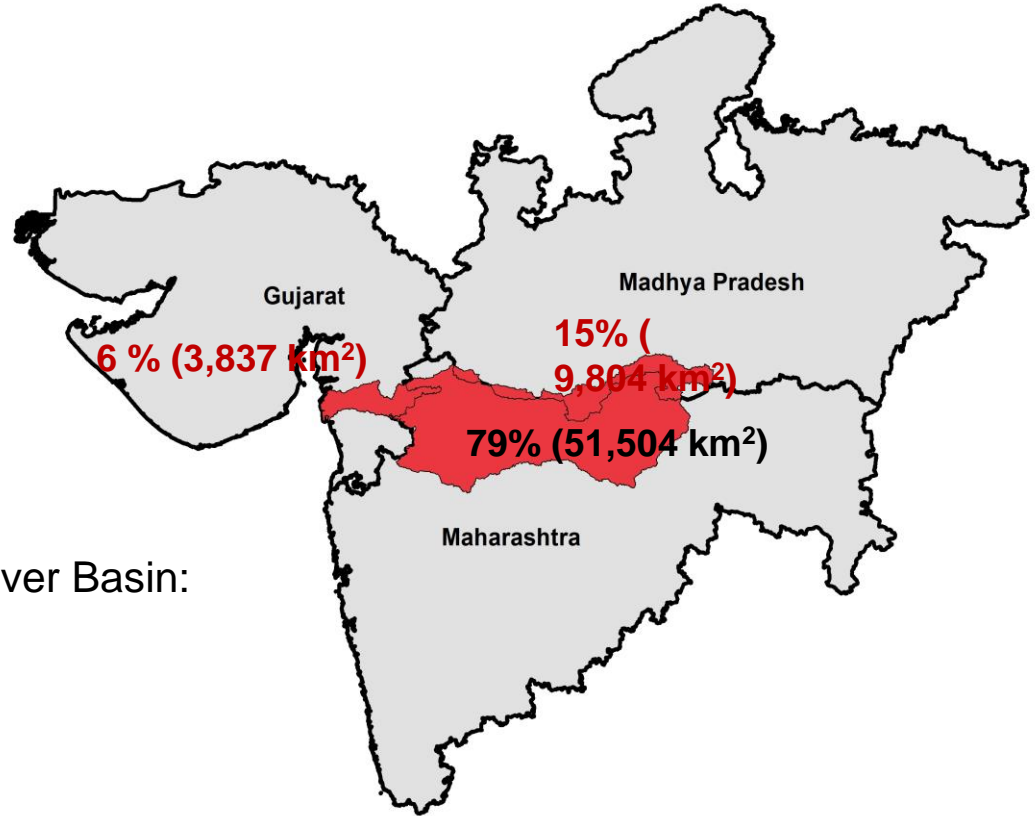
Implemented by

giz Deutsche Gesellschaft
für Internationale
Zusammenarbeit (GIZ) GmbH

**GNANAMI
GANGE**



Tapi River Basin

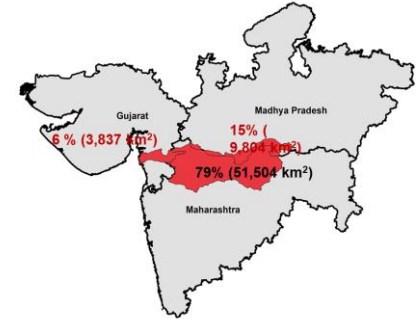


Total Catchment Area / Tapi River Basin:

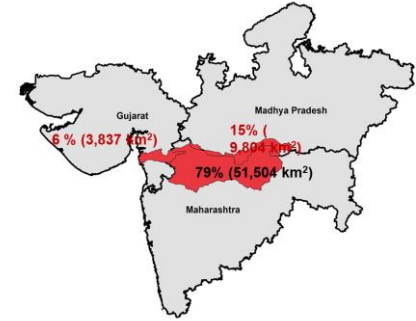
65,145 km²

Tapi River Basin Management Plan

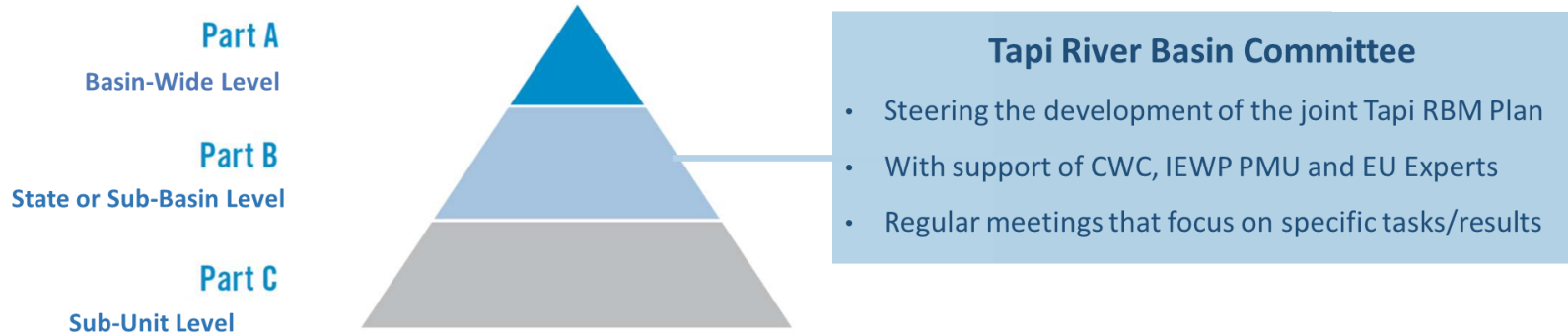
- Ongoing activity under the India-EU Water Partnership.
- Covers the entire Tapi River Basin: beyond administrative borders
- Tapi RBM Plan will be fully aligned to RBM Cycle
 - **Blending** EU with Indian approaches
- Enabling JOINT planning and management of all issues and challenges
 - **Combination of all State information** into one **integrated** RBM Plan
 - Overview on entire Tapi basin
 - Development/implementation is steered by each State - **based on joint aims.**
- The Tapi RBM Plan covers:
 - Surface waters and groundwater (maybe coastal waters)
 - Water Quality and Water Quantity



Tapi River Basin Management Plan – Coordination Structure



Institutional Set-up across Administrative Borders



Part A: Basin-wide level = entire river basin: Steered by ALL States sharing the river basin

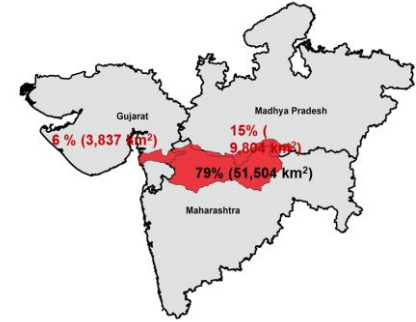
Part B: State level = state or sub-basin authorities

Part C: Sub-unit level = within states: sub-national units

Tapi River Basin Management Plan – Joint Vision and Objectives

Agreed Vision:

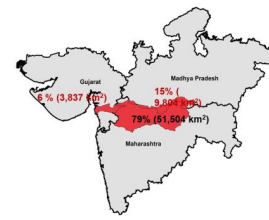
- ...ensures for sustainable water resources management in the Tapi River Basin enabling the protection of the aquatic environment as well as a sustainable socio-economic development and water supply security through appropriate measures.



Agreed objectives:

- to ensure good quality of surface waters and groundwaters through the reduction of pollution and all other relevant pressures.
- to ensure good/sufficient water quantity in surface waters and groundwaters through efficient water use and all other needed measures.

Tapi River Basin Management Plan



Five **Key Water Management** Issues agreed on 29 March 2019 between the three Tapi States:



Point Pollution from Urban Settlements & Industries



Area Source Pollution from Agriculture



Alterations of River Hydrology/Water Quantity



Alterations of Groundwater Quality and Quantity



Alteration of Morphology / Sand Mining

For each Key Issues:

- Visions and management objectives.
- Pressure/Impact Analysis and Risk Assessment including scenarios.
- Programme of Measures.
- Thematic maps are key to Tapi RBM Plan: easy overview on all issues on the basin –wide scale.

Continued engagement pre and post webinar

1. For queries and related engagements contact GIZ colleagues:

Delhi Office:

- Dr. Sumit Gautam (sumit.gautam@giz.de)
- Ms. Chhavi Sharda (chhavi.sharda@giz.de)

Uttarakhand (Dehradun) Office:

- Mr. Merajuddin Ahmad (merajuddin.ahmad@giz.de)

2. E-Learning platform - <http://78.46.247.119/>

(Temporarily hosted on AHT servers and will be transferred to the servers of training institutes.)

Contact: Rania - taha@aht-group.com/ Rebecca - roblick@aht-group.com

As a federally owned enterprise, GIZ supports the German Government in achieving its objectives in the field of international cooperation for sustainable development.

Published by:

Deutsche Gesellschaft für
Internationale Zusammenarbeit (GIZ) GmbH

Registered offices
Bonn and Eschborn

India office:

GIZ Office New Delhi
46 Paschimi Marg, Vasant Vihar
New Delhi 110057

Postal address:

Support to Ganga Rejuvenation
B-5/2, Safdarjung Enclave
New Delhi 110 029
India

E: [martina.burkard@giz.de/](mailto:martina.burkard@giz.de)
[chhavi.sharda@giz.de/](mailto:chhavi.sharda@giz.de)
sumit.gautam@giz.de

Author/Responsible/Editor, etc.:

AHT Group AG Management & Engineering

Design/layout, etc.: GIZ

Photo credits/sources: N.A.

URL links:

Responsibility for the content of external websites linked in this publication always lies with their respective publishers. GIZ expressly dissociates itself from such content.

On behalf of

German Federal Ministry for Economic Cooperation and Development (BMZ)
Support to Ganga Rejuvenation, Competence in Motion,
New Delhi, GIZ India

GIZ is responsible for the content of this publication.

In cooperation with:

